



# Accessibility Guide

# Facilities

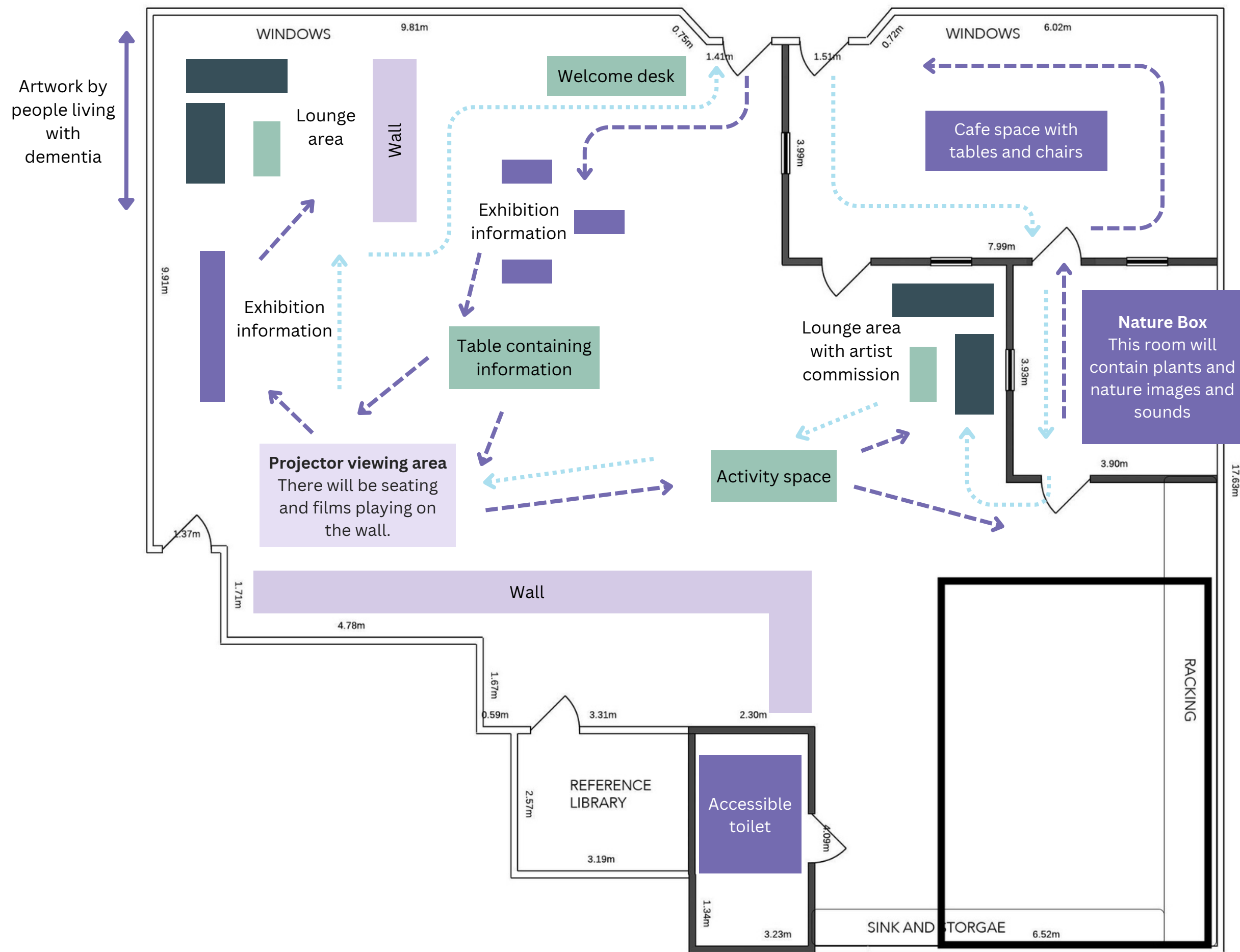
Our venues are wheelchair accessible and suitable for people with limited mobilities. Assistance Dogs are welcome.

Please contact Chloe Asker on [c.asker@surrey.ac.uk](mailto:c.asker@surrey.ac.uk) or (+44)7582554122 if you would like to discuss your accessibility needs prior to arriving at the exhibition.

During the exhibition, there will be staff present to assist you. We will be wearing Culture Box purple lanyards.

Both venues have an accessible toilet.

# Exeter exhibition guide



## Route A

This route takes you around the exhibition and contains some written information about the Culture Box project. It allows you to see the whole exhibition with some rest points.

Best for if you'd like to:

- learn something new
- read some information about a research project
- experience the whole exhibition.

## Route B

This route takes you around the multi-sensory elements of the exhibition with lots of opportunities to sit and rest. There is very little written information on this route.

Best for if you'd like to:

- experience the artwork and activities in the exhibition.
- have plenty of opportunities to sit down and take in the atmosphere.

# Content information

The exhibition deals with some challenging information about the impact of the pandemic on people living with dementia.

There is some information relating to death rates in the exhibition information area.

